

\$165,000

**Zoned Commercial General in Rural Retreat, VA
MLS # 45060-71394**



MLS# : 45060-71394

Price : \$165,000

Type : Commercial Property

Size : 0.42 Acres

Beds: 3

Baths : 2.00

Year Built :1984

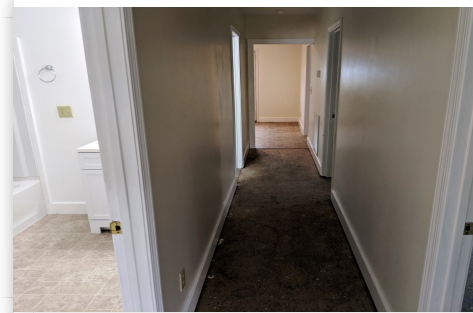
Address : 6819 W Lee Hwy , Rural Retreat , Virginia , 24368

FEATURES

- ✓ Remodeled
- ✓ High visibility
- ✓ Public utilities
- ✓ LP Gas

ABOUT THE PROPERTY

A remodeled residential home that offers 3bd/2ba, basement level efficiency apartment, and a huge 35'x23' attached garage perfect for warehouse space. This property is zoned Commercial General with many possibilities such as office space, rental space, warehouse space, retail space. Located 1 mile off exit 60 and minutes from downtown Rural Retreat. Highly visible property off of Lee Highway! Contact Kevin Dalton for more information at 276-620-4838.



CONTACT US

KEVIN DALTON

**ASSOCIATE BROKER / OWNER/
AUCTIONEER, GRI, QSC, EPRO**

📞 (276) 620-4838

✉ kevin@dalton2.com

🏠 Anders Realty And Auction

📍 850 Chapman Road, Wytheville,
Virginia, United States, 24382